



**RIPE NCC**  
RIPE NETWORK COORDINATION CENTRE

# Build your Dashboard and Monitor your Network

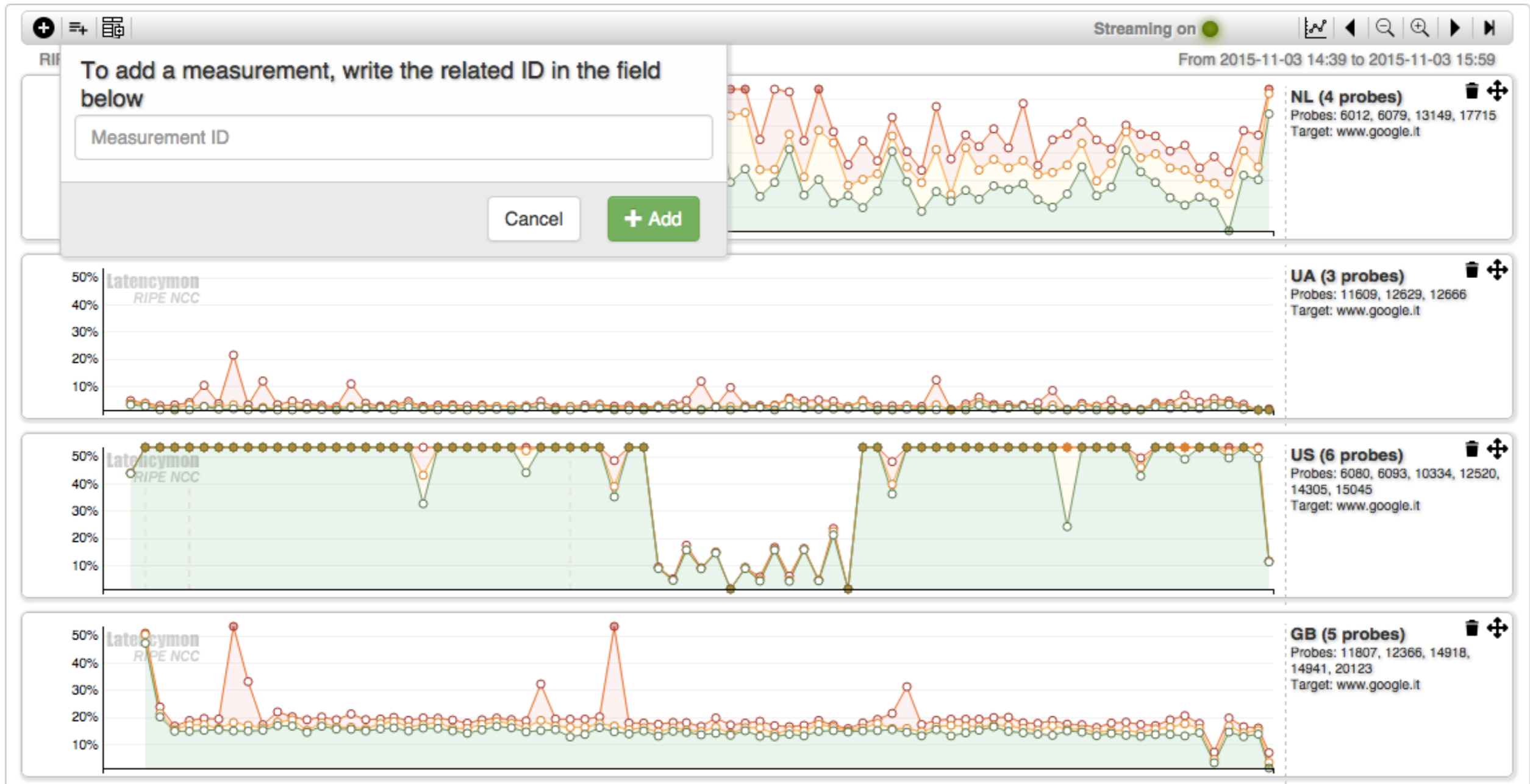
Massimo Candela | RIPE NCC



# What we will learn

- How to reach the tools in Atlas
- How to use the tools
- How to create a dashboard
- How to use the real-time results streaming

# LatencyMON



# Resources



- Documentation:
  - <https://atlas.ripe.net/docs/tools-latencymon/>
- Source:
  - <https://github.com/MaxCam/viz-atlas-latencymon>

# Tasks



1. Create a new HTML page
2. Embed LatencyMON
3. Set exactly what you want to see

# TraceMON



# Resource Info



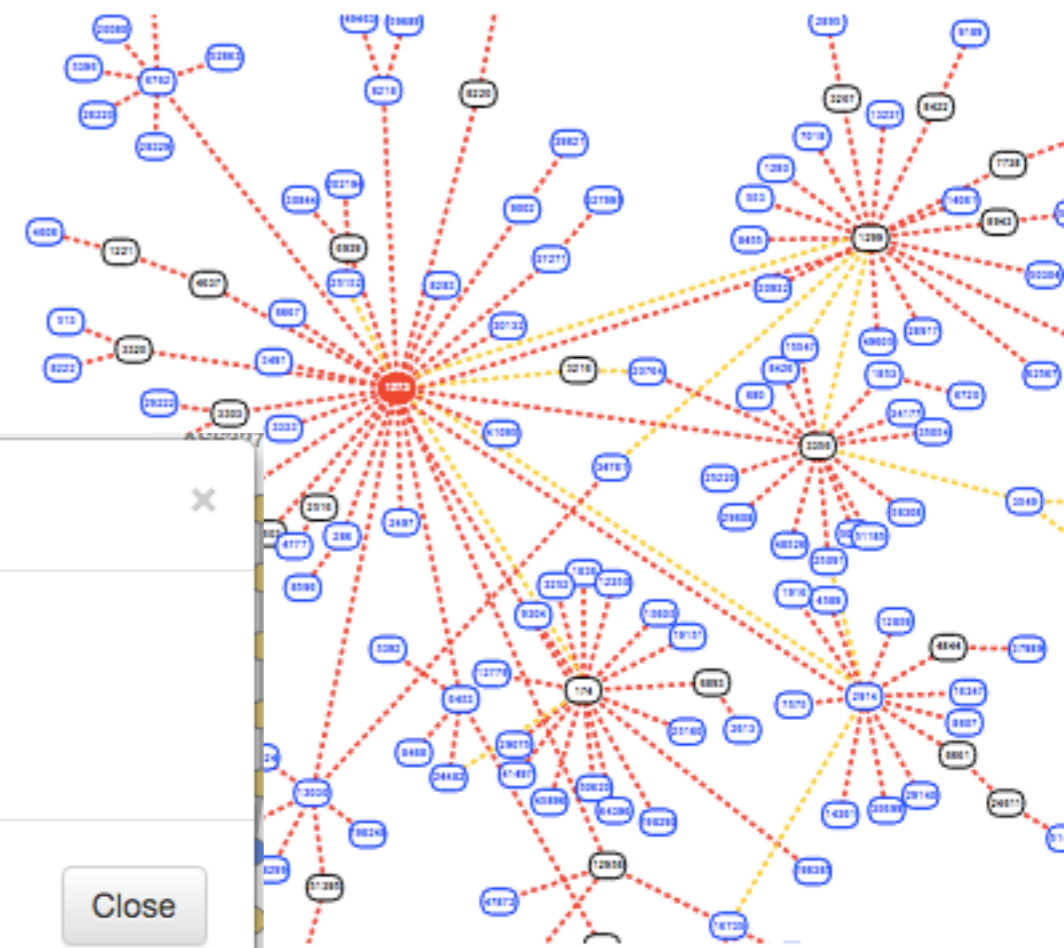
- IXP details (PeeringDB)
- Get/Update Location (OpenIPmap)
- Routing Information and BGPlay
- Whois / RIPE Database
- Technical contact emails

### Update location

**Resource:** 80.249.208.71  
Reverse DNS: gw.amsix.teltr.ripe.net

Select location:

The changes cannot per persisted yet. This feature will be enabled soon.



Highlight RIPE NCC managed values

organisation: ORG-NCC1-RIPE  
org-name: RIPE Network Coordination Center  
org-type: LIR  
address: Singel 258  
address: 1016 AB  
address: Amsterdam  
address: NETHERLANDS  
phone: +31 20 535 4444  
fax-no: +31 20 535 4445  
admin-c: CREW-RIPE  
admin-c: AP110-RIPE  
tech-c: CREW-RIPE  
mnt-ref: RIPE-NCC-RIS-MNT  
mnt-ref: RIPE-NCC-HM-MNT  
mnt-by: RIPE-NCC-HM-MNT  
created: 2004-04-17T09:55  
last-modified: 2017-04-03T15:08  
source: RIPE # Filtered

person: Andrea Cima  
address: RIPE NCC  
address: Singel 258  
address: 1016 AB Amsterda  
address: The Netherlands  
phone: +31 20 5354444  
fax-no: +31 20 5354445  
nic-hdl: ACM2-RIPE  
mnt-by: RIPE-NCC-HM-MNT  
org: ORG-PAGE1-RIPE

### Contacts for: AS3333

**tech-c:** ops@ripe.net  
**abuse\_c:** abuse@ripe.net

# Network Annotations



Measuring Akamai



# Resources



- Documentation:
  - <https://atlas.ripe.net/docs/tools-tracemon/>
- Source:
  - <https://github.com/RIPE-NCC/tracemon>

# Tasks

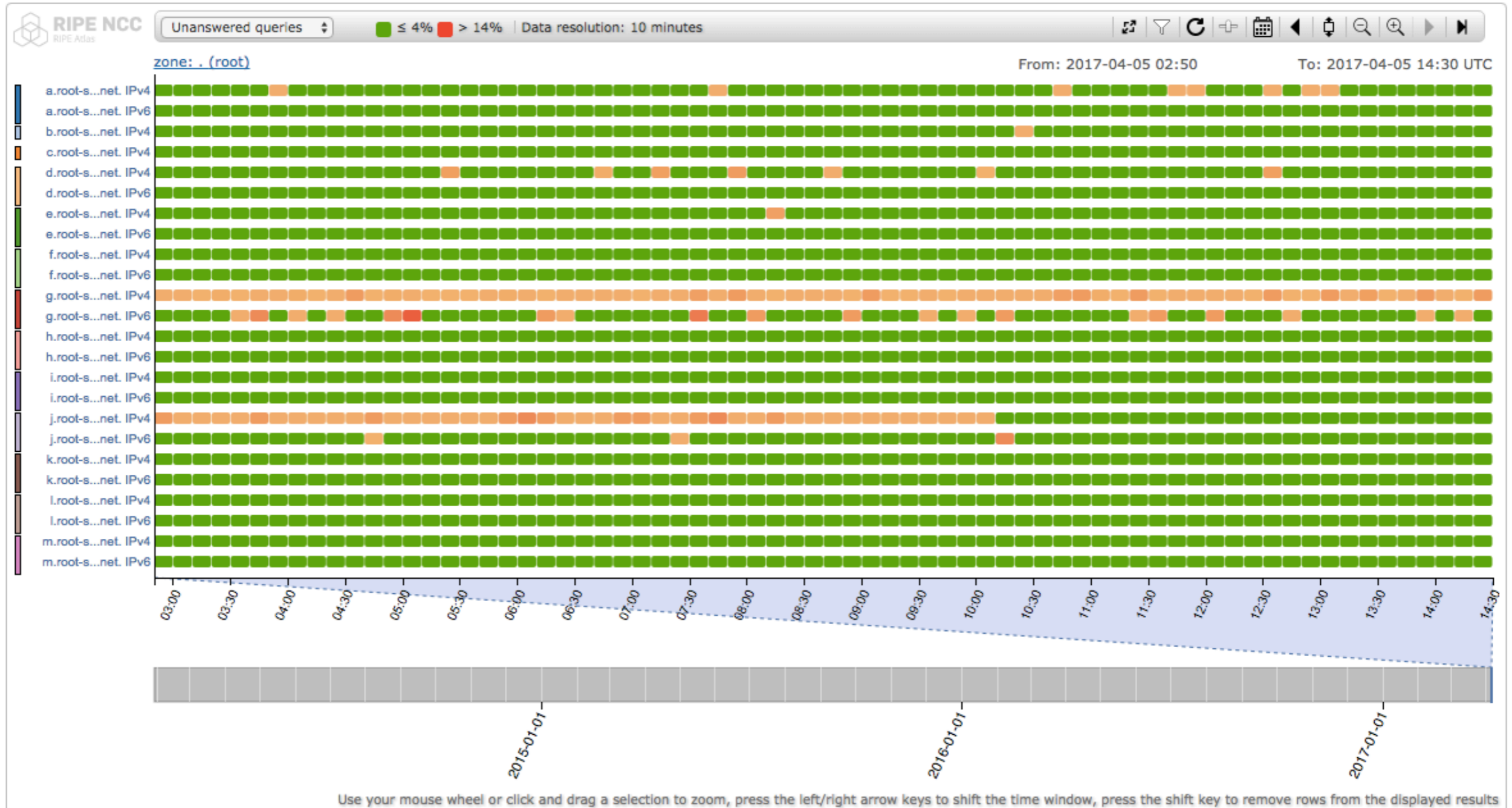


## 1. Embed TraceMON

# DomainMON



- DomainMON (<https://atlas.ripe.net/domainmon/>)
  - Up-to-date performance overview of your DNS zone



# Resources



- Documentation:
  - <https://atlas.ripe.net/docs/domainmon/>
  - <https://atlas.ripe.net/dnsmon/doc/embed>
- Source:
  - <https://github.com/RIPE-NCC/dnsmon>



# Tasks

1. Embed DomainMON
2. Enjoy your dashboard
3. Extra:
  1. Use the console
  2. Sync widgets (e.g. in time)



# Questions

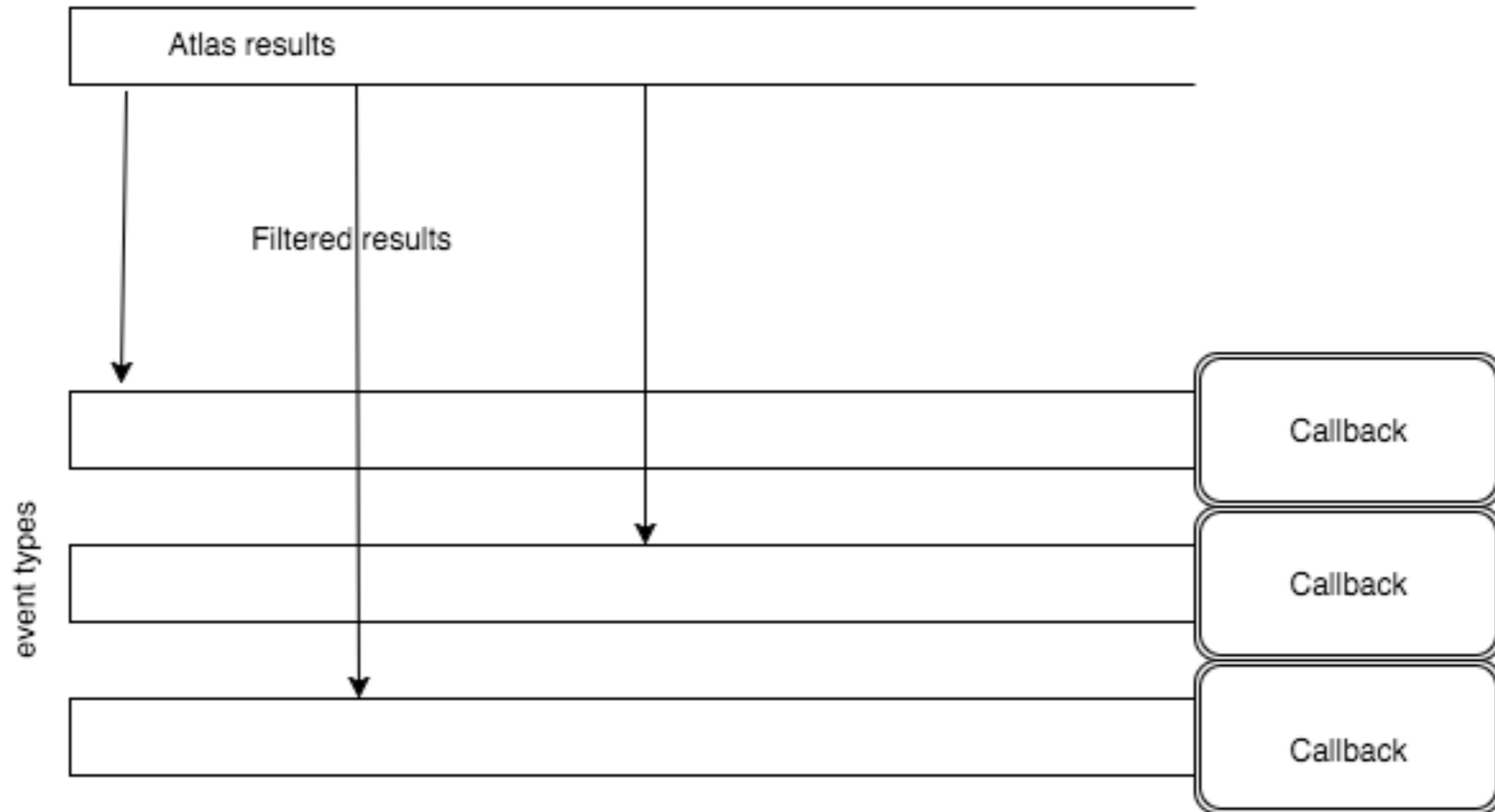


# RIPE Atlas streaming



- Allows users to receive the measurement results as soon as they are sent by the probes in real time
  - Publish/subscribe through web sockets
- There are three types of data:
  - Measurement results
  - Probe connection status events
  - Measurements metadata
- Documentation:
  - <https://atlas.ripe.net/docs/result-streaming/>

# How it Works





# Monitoring server response time



- Scenario: customers complain it takes a long time to reach your server in certain moments of the day
- Action: ping\* your server from 50 probes
  - Choose acceptable latency threshold
  - Notice and react when you start receiving samples

\*it can be something else
- Task: Use the ping measurement ID 1791207
  - Impose a threshold on “min” (the minimum result of the three ping attempts)
  - Listen by IP or prefix instead of ID

# Tasks



1. Copy and paste from the documentation to create a basic connection
  - or click here <http://atlas.ripe.net/webinar/streaming01.html>
2. Open the development console
3. Wait for results to arrive
4. Impose a threshold on “min” (e.g. 30ms)
5. Listen by IP or prefix instead of ID
6. See what else you can do from the DOC



# Questions

